



# THE CUBE

a creation



Partner of all your achievements



Metal-textile structures, floors and furniture  
for events



# Quality at the service of your performance

For more than 22 years, in the heart of Alsace near Strasbourg, ATS has established itself as the leader in demountable floors and as an innovative player in the manufacture of metal-textile structures.

A complete range of marquees, floors and furniture for events.



Eric Loux,  
founder and managing director  
of ATS

*Always listening...*

#### **Enthusiasm**

Each project is unique and we look for the most suitable solution.

#### **Audacity**

Think outside the box to find the most innovative solution for you.

#### **Integrity**

This is a core value of the company. It resides in each of our employees, fostering the honesty and the understanding of our strengths and weaknesses.

#### **Courtesy**

On a daily basis, we strive to demonstrate professionalism, friendliness and courtesy.

#### **For 22 years**

Our customers' requirements lead us to manufacture reliable, robust and competitive systems to meet specific demands, tailor-made projects that comply with safety standards.

#### **All-in-one solutions**

The evolution in the use of the mobile structure has led us to offer complete turnkey solutions.

Whether for events, storage or any other use, we offer the structure equipped with flooring, cladding, glass facades, doors, etc.

#### **Innovation**

ATS designs the majority of its products within its own design office. Strict control of the production process guarantees constant product quality.

The flexibility of our company also allows us to produce small batches, or even single parts adapted to the needs of our customers.

#### **Reliable systems**

ATS products are designed for intensive use. Reliable and sturdy, they retain their good looks even after multiple uses.

#### **Time saver**

Our temporary solutions are easy to assemble and disassemble even

by unqualified personnel thanks to our assembly instructions and our technicians who are always ready to answer your questions.

#### **Certified products**

All products comply with European standards. NF environmental standards and TUV certification for floors and furniture.

The wood treatments and paints for the bases are guaranteed to be harmless.

#### **Tailor-made racks**

Custom-made racks facilitate transport, loading, unloading and storage of products. These racks, made of galvanized steel, accommodate: canvas coverings, floors, frames and folding furniture. Creation of racks according to your needs.

#### **Environmentally friendly products**

All our wood is of European origin, labeled, PEFC certified and from ISO certified factories. The woods come from replanted forests.

#### **Investment**

ATS has invested in a new additional machining center, bringing the number of machines to 3, thus enabling us to respond even more quickly to our customers' demands.





# TABLE OF CONTENTS

MARQUEES FLOORS  
FLOORS FRAMES

pages 4 to 7  
pages 8 to 10

MARQUEES TENTS STRUCTURES

pages 14 to 27

TARPAULIN

pages 30 and 31

CLADDING

pages 32 to 35

DOORS AND GLASS FACADES

pages 36 and 38

FOLDING FURNITURE

pages 40 and 41

RECEPTION FURNITURE

pages 44 and 45

TRANSPORT RACKS

pages 46 to 53

ACCESSORIES

pages 11 to 13, 24, 28, 39, 42 and 43

MACHINING CENTER/ACHIEVEMENTS

pages 54 to 55

# MARQUEES FLOORS



► Cassette floor in three-ply spruce "TERRACOTTA VIP"



- Quality wood of European origin
- Reliable and robust products suitable for intensive use
- Modular system adaptable to all configurations in width and length
- Different floor qualities

All of our floors are CTS standards suitable for public use. (Resistance: 500 kg/m<sup>2</sup>)

## ► Different types and qualities of wood



### Fir flooring

21/22 mm thick, wood: fir, surface treatment: planed impregnated, weight: approx. 12 kg/m<sup>2</sup>, battens on each board, grooving on both sides



clear



brown/orange



autoclave

### Three-ply spruce flooring

21 mm thick, wood: spruce, surface treatment: hot-impregnated varnish, weight: approx. 10.5 kg/m<sup>2</sup>, battens autoclave treatment class III, grooving on both sides



Triple-ply spruce "KNV"  
mat dark brown



Triple-ply spruce  
"TERRACOTTA"  
pale brown



Triple-ply spruce "FIRST"  
light brown mat (quality B/C+)



Triple-ply spruce  
"TERRACOTTA VIP"  
shiny pale brown

### Phenolic coated flooring

21 mm thick, wood: plywood **ALL BIRCH**, non-slip coating 170 g/m<sup>2</sup>, European sourcing.



### Triple-ply flooring with double comb autoclave

21 mm thick, wood: spruce, 3 square cuts, autoclave treatment Class III Brown



### Floor coating line

We offer you a solution that allows us to master the surface treatment of floors but also volumetric elements.

We are now able to respond quickly to your varnish needs and also to the renovation of your floors.

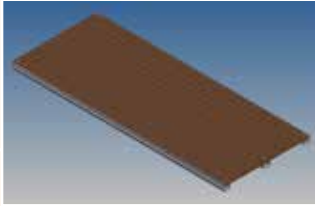


## ► Different types of flooring

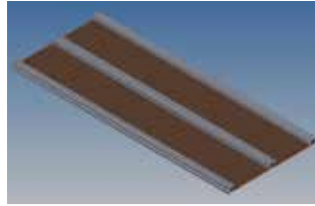
### Cassette floor on frame

- composed of a male and a female profile
- filling of the cassette with 21 mm three-ply spruce wood
- wood/aluminum assembly by screw + lock nut + self-tapping screws
- with or without central reinforcement
- dimensions: 2 m x 1 m, 2.5 m x 1 m, 3 m x 1 m

Top



Bottom



Assembly



## Self-weighted cassette

- galvanized steel and UPN 100 frame
- square tube crossbeams 60 x 2 mm
- equipped with fork guides
- holes for fixing inserts and plates
- three-ply spruce flooring
- thickness: 21 mm
- surface treatment: hot-impregnated varnish
- different dimensions available:
  - 3 m x 1.5 m
  - 4 m x 2 m
  - 5 m x 2.5 m
  - 10 m x 2.5 m



The advantage of the cassette floor self-weighted ATS is to allow an assembly of a structure without any additional means of anchoring or ballast, holding being ensured by the own weight of the assembly



### Examples of achievements



### Cassette in 10 x 2.5 m



# FLOORS FRAMES



► Double layer frame with aluminum rail with support for wedging stays



- Double frame with or without aluminum rail
- Simple layer frame
- Dance floor
- Canopy floor, on the ground installation
- Aluminum rails
- Accessories

All of our floors are CTS standards suitable for public use. (Resistance: 500 kg/m<sup>2</sup>)

## ► Different types of frames

### Double layer frame with aluminum rail

- 1st layer: galvanized steel tube stringers
- 2nd layer: galvanized steel tube crossbeams and anodized 15μ aluminum rail
- fixation plates and accessories included



### ATS double layer frame (without aluminum rail)

- 1st layer: galvanized steel tube stringers
- 2nd layer: galvanized steel tube crossbeams
- fixation plates and accessories included



### Simple layer frame

- One layer : galvanized steel tube crossbeams and anodized 15μ aluminum rail
- fixation plates and accessories included



### Transport and storage

ATS manufactures custom-made racks, especially adapted to the transport and storage of frames. The galvanized steel racks are equipped with a fork guide on each side.

## Dance floor

- Edging with anodized 15μ aluminum rail
- Corner connector, straight sleeve, finishing rail

### Corner connector

- Aluminum dance flooring

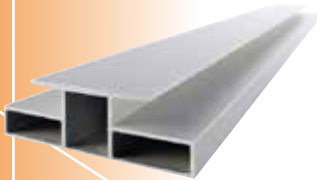


### Straight sleeve

- Aluminum dance flooring



## Aluminum rails for flooring



Clear anodized aluminum profile  
Use: laying on 21 mm flooring  
Dimensions: 150 x 44 mm



Clear anodized aluminum profile  
Use: laying on double layer frame or simple layer, for 21 mm flooring  
Dimensions: 150 x 71 mm



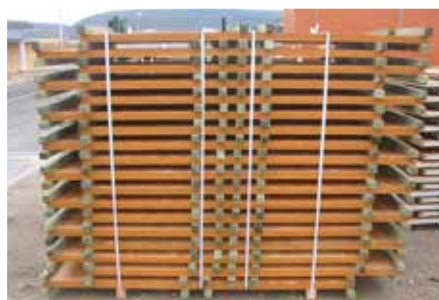
Clear anodized aluminum profile  
Use: aesthetic finish and barrier-free access  
Dimensions: 157 x 44 mm

## Canopy floor without frame - on the ground installation

- three-layer spruce flooring, 21 mm thick
- floor laying/indoor and outdoor use, simple and quick to install.
- battens of 45 x 45 mm (CANOPY construction)
- dimensions: 0.5 x 0.5 m, 1 m x 0.5 m, 2 m x 0.5 m, 3 m x 0.5 m, 4 m x 0.5 m



► battens 45 x 45 mm



► easy packaging



► installation example with folding tent PRO

# ACCESSORIES

## Floors and frames

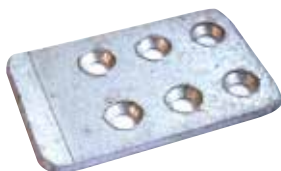
### ► Floors

#### Batten : 600 x 58 x 21 mm



- calibrated
- two chamfers
- lumber wood
- autoclave treatment class III

#### ATS metal plate



- dimensions: 50 x 80 mm, thickness 3 mm
- with 6 countersunk holes for countersunk screws Ø 5 mm

#### Floor stop

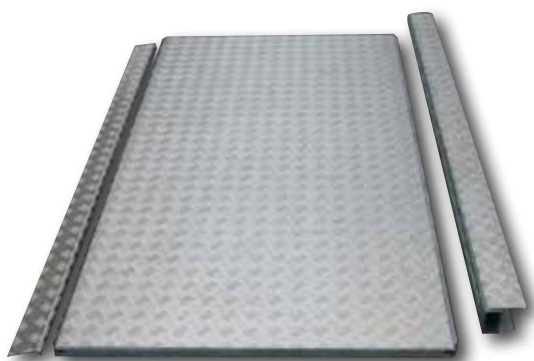


- zinc-plated steel
- prevents a self-supporting floor from slipping out of its frame



### Ramps, ramp nose, long section and gable adapters, guardrails

- stable and solid non-slip aluminum sheet metal ramp
- galvanized steel frame



People with reduced mobility access



Long section adapter



Gable adapter



Ramp with guardrail

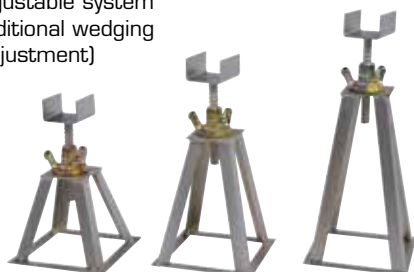
### Corner connector and sleeve

#### for dance flooring



### Stays and adjusting rods

- in galvanized or zinc-plated steel
- different fixed heights available
- optional adjustable system (20 cm additional wedging with nut adjustment)



### Twisted steel post

- in forged steel twisted TOR Ø 25 mm



- available lengths:
  - 500 mm
  - 800 mm
  - 1200 mm
  - 1500 mm

## ► Frames

### Frames parts

Frames parts	Article	Code
	<p>Single bracket for flooring frame type W</p> <p>Single bracket for flooring frame type ATS</p> <ul style="list-style-type: none"> <li>- galvanized steel</li> <li>- allows the stud stringer to be fixed to the ground by staking and to block the rail</li> </ul>	<p>ACO004</p> <p>ACO005</p>
	<p>Start cap for flooring frame type W</p> <p>Start cap for flooring frame type ATS</p> <ul style="list-style-type: none"> <li>- galvanized steel</li> <li>- allows to create a start from an intermediate stringer</li> </ul>	<p>ACO008</p> <p>ACO009</p>
	<p>Smooth stringer wedge for flooring frame type W</p> <p>Smooth stringer wedge for flooring frame type ATS</p> <ul style="list-style-type: none"> <li>- galvanized steel</li> <li>- can be used to extend the intermediate smooth stringer to make an end smooth stringer</li> </ul>	<p>ACO039</p> <p>ACO011</p>
	<p>Adjustable stop for flooring frame W</p> <ul style="list-style-type: none"> <li>- galvanized steel</li> <li>- serves as a rail stop</li> </ul>	<p>ACO003</p>
	<p>Fastening plate for PAGODE structure type W</p> <ul style="list-style-type: none"> <li>- galvanized steel</li> </ul>	<p>ACO002</p>
	<p>Reinforced sleeve for flooring frame W</p> <p>Light sleeve for flooring frame W</p> <ul style="list-style-type: none"> <li>- galvanized steel and anodized aluminum</li> <li>- allows to fix the plate of the structure</li> </ul>	<p>ACO006</p> <p>ACO007</p>
	<p>Floor stop + clamping screw</p> <ul style="list-style-type: none"> <li>- zinc-plated steel</li> </ul>	<p>ACO001</p>

## Double layer frame with aluminum rail

- 1st layer: galvanized steel tube stringers
  - 2nd layer: galvanized steel tube crossbeams and anodized 15μ aluminum rail
- The stringers, the crossbeams and the rails are available in standard 5 m, 4 m, and 3 m.

Frames parts	Article	Code
	Start studs stringer type W length 5 m - galvanized steel	LOT001
	Intermediate studs stringer type W length 5 m - galvanized steel	LOT004
	End studs stringer type W length 5 m - galvanized steel	LOT007
	Start smooth stringer type W length 5 m - galvanized steel	LOL0011
	Intermediate smooth stringer type W length 5 m - galvanized steel	LOL0021
	End smooth stringer type W length 5 m - galvanized steel	LOL0031
	Crossbeam 50 x 50 type W length 5 m - galvanized steel	TRA001
	Aluminum rail 150 x 71 mm type W length 5 m	RAP001



## Transport and storage

ATS manufactures custom-made racks, especially adapted to the transport and storage of frames. The galvanized steel racks are equipped with a fork guide on each side.

# MARQUEES TENTS STRUCTURES



► Topline structure 15 x 30 m H3 m with cassette floor

**NEW**

## ► **Topline structures**

10 m, 12 m, 15 m, 20 m to 50 m

**NEW**

## ► **Stockline structures**

10 m, 12 m, 15 m, 20 m to 50 m

**NEW**

## ► **Flatline structures**

10 m, 12 m, 15 m, 20 m to 50 m

**NEW**

## ► **Woodline structures**

10 m, 12 m, 15 m, 20 m

**NEW**

## ► **Partiline/Karpan94 structures**

6 m, 8 m, 10 m

## ► **VAL structures**

5 m, 6 m, 7 m, 10 m, 15 m, 20 m

## ► **Karpan structures**

10 m, 12 m, 15 m, 20 m to 50 m

## ► **Pagodes Quattro**

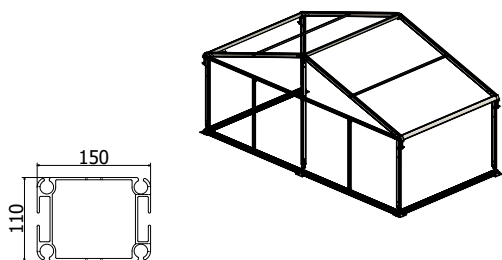
3 x 3 m, 4 x 4 m, 5 x 5 m, 6 x 6 m, 7 x 7 m

## ► **Aluminum PRO folding tents**

## ► **Accessories**

## ► Structure : TOPLINE150

**10 m wide  
3 m side height**



### Structure in aluminum clear anodized 15μ:

- Span 10 m
- Rows 5 m (center-to-center distance between posts)
- Main profile: 150 x 110 mm 6 grooves
- Intermediate purlin: square profile 60 x 60 mm
- Ridge: rectangular profile 125 x 75 mm
- Quarter-round truss: 150 x 150 mm
- Steel bracing cables with pvc sheathing
- Base plates and all parts in hot-dip galvanized steel
- Curtain bars
- Roof tension through bars
- Fixing by staking (500 mm stakes supplied as standard)
- Structure designed for adaptation of all accessories (cladding panel, glass panel, door...)

Page 24

ACCESSORIES

Page 24

ACCESSORIES

## Optional: Outdoor LED lighting

- on quarter-round truss: 150 x 150 mm



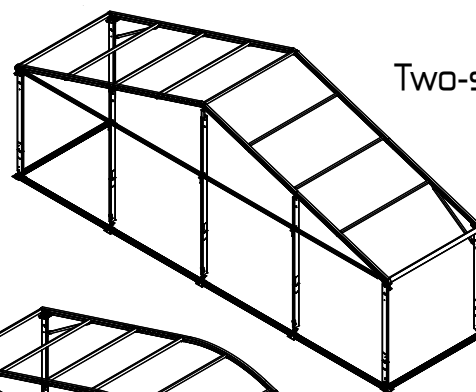
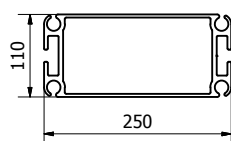
**LED lighting,  
ask us!**

## ► Structure : TOPLINE250 and TOPLINE Multi

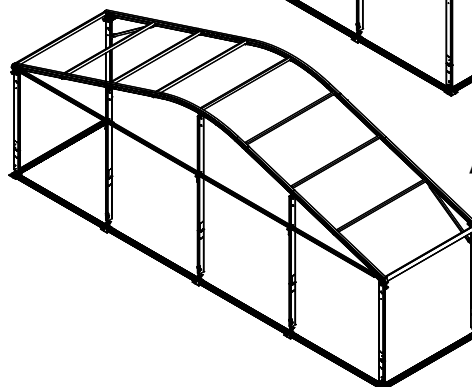
**10 m, 15 m, 20 m and 25 m wide**  
**H 3 m, 4 m and 5 m side height**

### Structure in aluminum clear anodized 15µ:

- Span 10 m
- Rows 5 m (center-to-center distance between posts)
- Main profile: 250 x 110 mm 6 grooves
- Intermediate purlin: rectangular profile 125 x 75 mm
- Ridge: rectangular profile 125 x 75 mm
- Quarter-round truss: 150 x 150 mm
- Steel bracing cables with pvc sheathing
- Base plates and all parts in hot-dip galvanized steel
- Curtain bars
- Roof tension through bars
- Fixing by staking (500 mm stakes supplied as standard)
- Structure designed for adaptation of all accessories (cladding panel, glass panel, door...)



Two-slope structure



Arched structure



## ► Structure : STOCKLINE



### CTS or NV CERTIFICATION



Different profile sections available depending on the required span and height.

- Roof in translucent or opaque M2 PVC tarpaulin (optional roof underlay)
- Walls in PVC sheeting or cladding (single skin or insulating)

## ► Structure STOCK156

Width 4 m, 6 m, 8 m  
Height 4 m

## ► Structure STOCK239

Width 8 m, 10 m and 15 m  
Height 3 m and 4 m



## Transport and storage

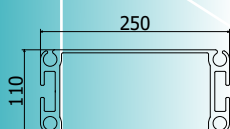
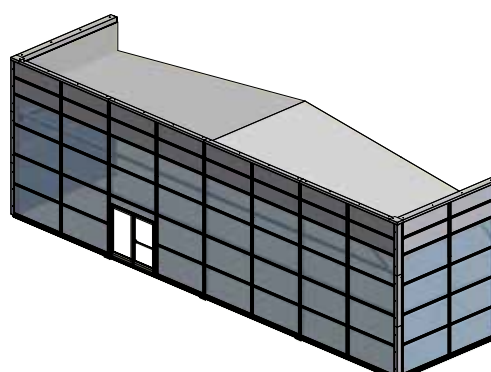
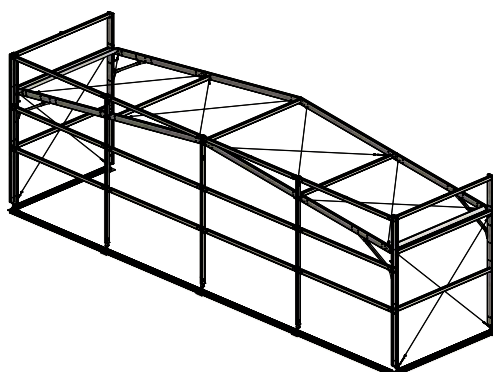
ATS manufactures custom-made racks, especially adapted to the transport and storage of frames. The galvanized steel racks are equipped with a fork guide on each side.



**10 m, 15 m and 20 m wide  
5 m and 6 m side height**

**Structure in aluminum clear anodized 15µ:**

- Span 20 m
- Rows 5 m (center-to-center distance between posts)
- Main profile: 250 x 110 mm reinforced 6 grooves
- Intermediate purlin: rectangular profile 150 x 110 mm
- Ridge: rectangular profile 150 x 110 mm
- Eave height: 5 m
- Overall height: 6.50 m
- Steel bracing cables with pvc sheathing
- Base plates and all parts in hot-dip galvanized steel
- Roof tension through bars
- Fixing by staking (800 mm stakes supplied as standard)
- Including parapet crossbeams and canopies



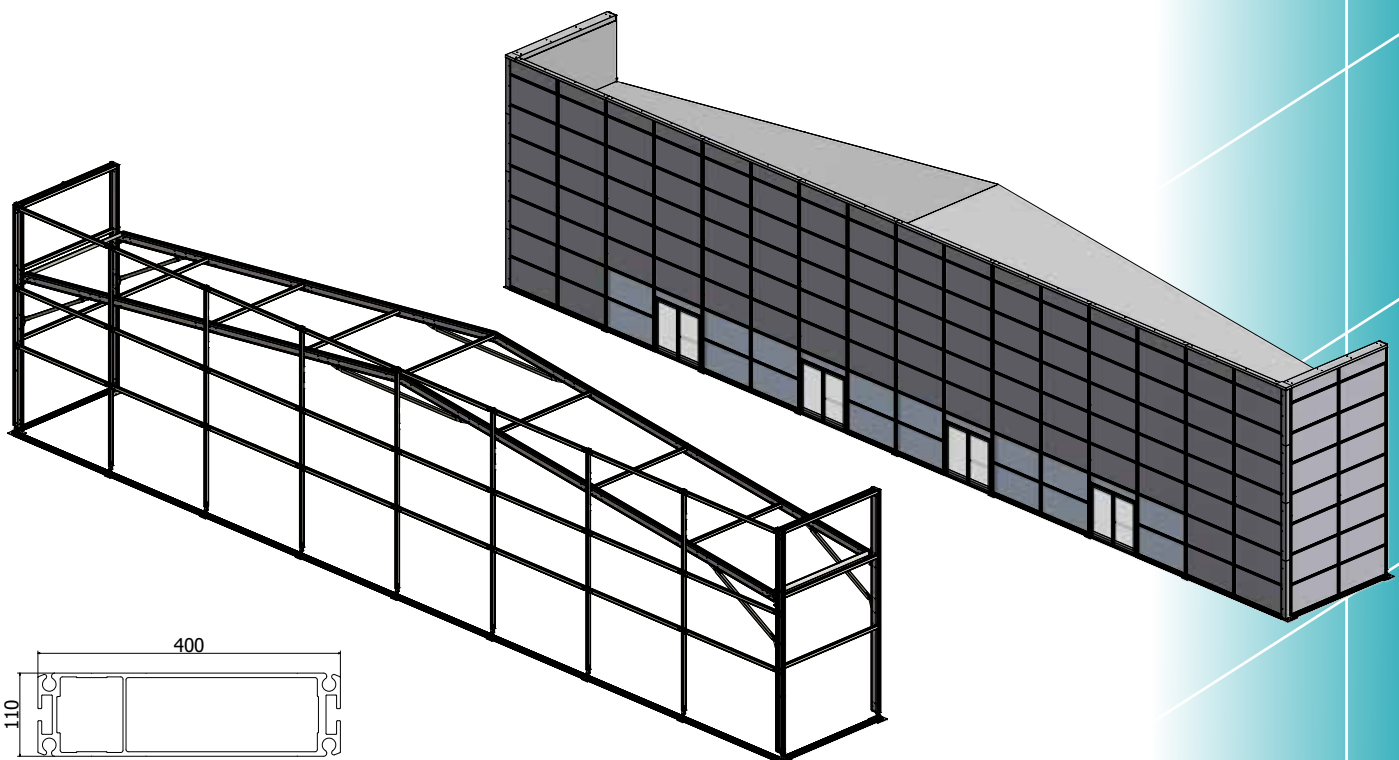
## ► Structure : FLATLINE400



**30 m and 40 m wide  
6 m side height**

### Structure in aluminum clear anodized 15µ:

- Span 40 m
- Rows 5 m (center-to-center distance between posts)
- Main profile: 400 x 110 mm reinforced 6 grooves
- Intermediate purlin: rectangular profile 150 x 110 mm
- Ridge: rectangular profile 150 x 110 mm
- Eave height: 6.50 m
- Overall height: 9.40 m
- Steel bracing cables with pvc sheathing
- Base plates and all parts in hot-dip galvanized steel
- Roof tension through bars
- Fixing by staking (1200 mm stakes supplied as standard)
- Including parapet crossbeams and canopies



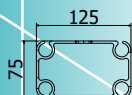
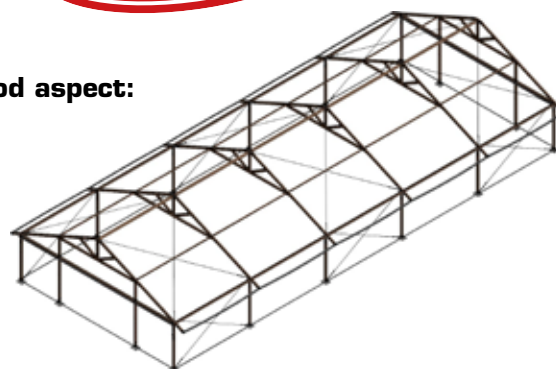
## ► Structure : WOODLINE

**NEW**

**6 m, 8 m and 10 m wide  
2.5 m and 3 m side height**

**Structure in aluminum clear anodized 15μ, stained wood aspect:**

- Span 10 m + roof overhangs
- Rows 5 m (center-to-center distance between posts)
- Main profile: 125 x 75 mm 4 grooves
- Intermediate purlin: square profile 60 x 60 mm
- Ridge: rectangular profile 125 x 75 mm
- Steel bracing cables with pvc sheathing
- Base plates and all parts in hot-dip galvanized steel
- Curtain bars
- Roof tension through bars
- Fixing by staking (500 mm stakes supplied as standard)



Mounting system with flange



Aluminium profile,  
wood stained

## ► Structure : PARTILINE/KARPAN94

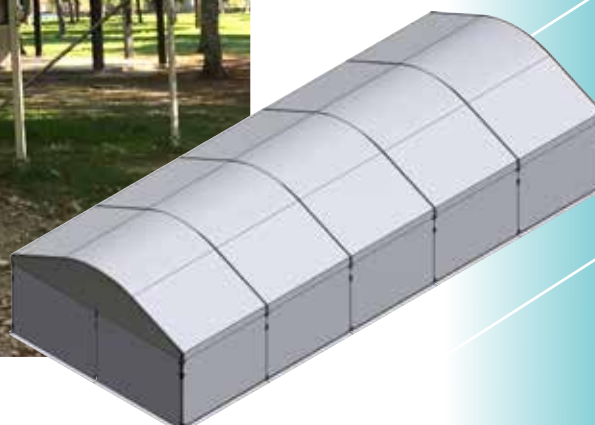
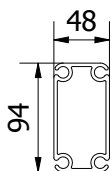
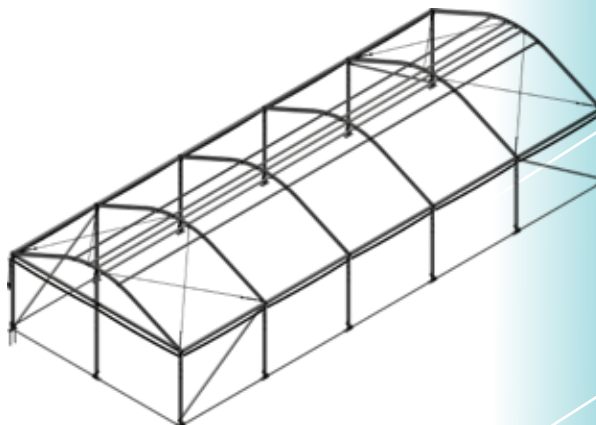
**6 m, 8 m and 10 m wide  
2.3 m side height**

**NEW**

### **Structure in aluminum clear anodized 15μ:**

- Span 6 m
- Rows 3 m (center-to-center distance between posts)
- Main profile: 94 x 48 mm 4 grooves
- Intermediate purlin: square profile 40 x 40 mm
- Eave purlin: rectangular profile 80 x 60 mm
- Steel bracing cables with pvc sheathing
- Base plates and all parts in hot-dip galvanized steel
- Curtain bars
- Roof tension through bars
- Fixing by staking (500 mm stakes supplied as standard)

*Easy installation  
for your small events*



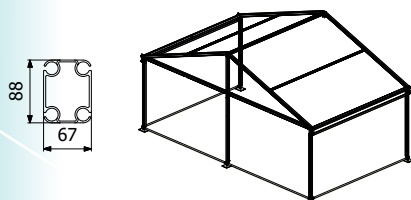
## ► Structure VAL88

### VAL the simplicity of assembly

The little reception tent that looks just like a big one!  
Suitable for exhibitions, reception, storage, events.  
Modular and customizable structure.  
Tool-free assembly.  
Roof tensioning system integrated in the pole.  
BVCTS certified.  
Alternative in 4 m row.

#### Structure in aluminum clear anodized 15µ:

- Span 5 m
- Rows 4 m (center-to-center distance between posts)
- Main profile: 88 x 67 mm 4 grooves
- Intermediate purlin: square profile 43 x 43 mm
- Ridge: rectangular profile 88 x 67 mm
- Steel bracing cables with pvc sheathing
- Base plates and all parts in hot-dip galvanized steel
- Curtain bars
- Roof tension through bars
- Fixing by staking (500 mm stakes supplied as standard)



Assembly  
half moon + half-truss



Assembly pole + half-truss



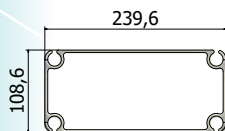
Available in our accessories:  
the adjustable claw

	VAL 88 - 4 m	VAL 88 - 5 m	VAL 88 - 6 m	VAL88 - 7 m
Ridge height	3.15 m	3.30 m	3.50 m	3.70 m
Side height (under truss) 2.30 m	2.30 m	2.30 m	2.30 m	
Row width	4 m	4 m	4 m	4 m

## ► Structure VAL156 ► Structure VAL239

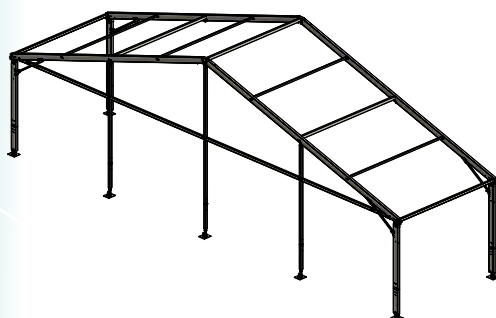
### 8 m and 10 m wide 2.5 m and 3 m side height

- Main profile:  
156.4 x 78.4 mm 4 grooves
- Intermediate purlin:  
rectangular profile 65.4 x 58.4 mm  
and 65.4 x 58.4 mm
- Ridge:  
rectangular profile 120.4 x 78.4 mm



### 15 m and 20 m wide 2.5 m, 3 m and 4 m side height

- Main profile:  
239.6 x 108.6 mm 4 grooves
- Intermediate purlin:  
rectangular profile 120.4 x 78.4 mm  
and 65.4 x 58.4 mm
- Ridge:  
rectangular profile 120.4 x 78.4 mm

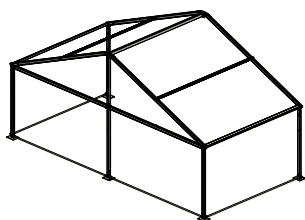
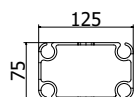


## ► Structure KARPAN125

**6 m, 8 m and 10 m wide  
2.5 m and 3 m side height**

### Structure in aluminum clear anodized 15μ:

- Span 5 m
- Rows 5 m (center-to-center distance between posts)
- Main profile: 125 x 75 mm 4 grooves
- Intermediate purlin: square profile 60 x 60 mm
- Ridge: rectangular profile 125 x 75 mm
- Steel bracing cables with pvc sheathing
- Base plates and all parts in hot-dip galvanized steel
- Curtain bars
- Roof tension through bars
- Fixing by staking (500 mm stakes supplied as standard)



Page 24

ACCESSORIES



Fire resistance

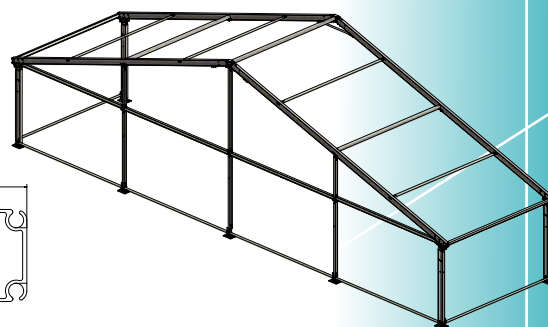
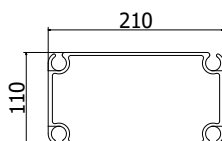
All our  
tarpaulins  
are certified



## ► Structure KARPAN210

**10 m, 15 m, 20 m and 25 m wide  
H 2.5 m, 3 m and 4 m side height**

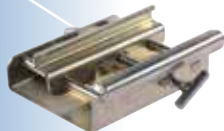
- Main profile: 210 x 110 mm reinforced 4 grooves
- Intermediate purlin:  
rectangular profile 125 x 75 mm and square 60 x 60 mm
- Ridge: rectangular profile 125 x 75 mm



# ACCESSORIES

## Marquees, tents and structures

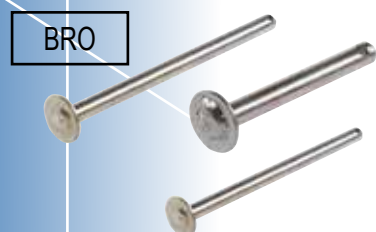
### Adjustable suspension claw



### Stability gantry



### Flat head pins



Different models, contact us.

### Gutter

PAGO-GOBO

Different dimensions  
contact us.



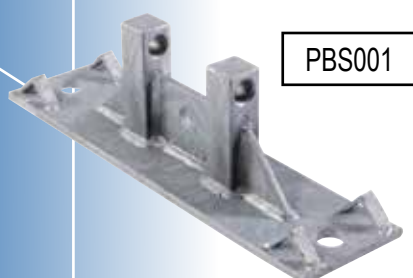
### Assembly fork

ACS062

Different dimensions  
contact us.



### Base plate for structure



Different models, contact us.

### Threading guide



ACS247

### Sleeves



ACS195

outside  
15/25 m



ACS061

outside 10 m



ACS060

intermediate

### Tensioning system



ACS032 ECO



ACS033 mobile

Different models, contact us.

### Bracing cables



Different dimensions contact us.

### Complete strap + ratchet set



Different models, contact us.

### Rigid gutter support



ACS0461

### Thermal post driver PRO

Two-stroke engine, 80 cc displacement  
Strike force: 1,300 strokes min.  
Fuel: 2% oil/petrol mixture  
Start-up through starter cord and starter



Optional: handling trolley

### Door post claw



ACS074



ACS075



ACS073

Long section Long section Gable

### Door post

PBS071



POT332009



Door post plate

### Twisted steel post



PITO-D25X

Different dimensions contact us.

## ► PAGODE Quattro



Dimensions:

3 x 3 m, 4 x 4 m, 5 x 5 m, 6 x 6 m, 7 x 7 m

Heights: 2.20 m, 2.30 m or 2.50 m

- frame in aluminum profile
- 3 grooves thickness 2 mm
- white translucent canvas coverings PVC 620 g/m<sup>2</sup> flame retardant M2
- color: white
- 4 solid curtains
- sliding curtains with central lacing
- sheath on each curtain
- roof tarpaulin with wave or straight valance (please specify)
- curtain tensioning bars and supports not included

Options: window curtain, opaque tarpaulin, crystal tarpaulin

**Versatility • Originality • Innovation**



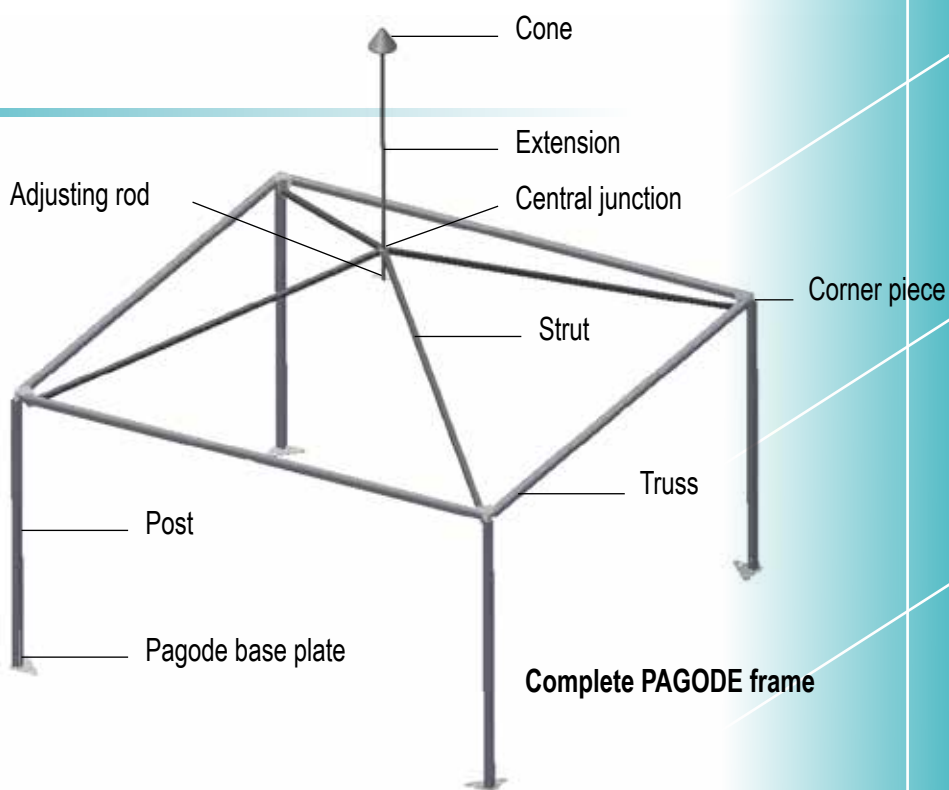
## ► PAGODE frames

Height 2.20 m

3 x 3 m	PAG315-3X3H2.2-OS
4 x 4 m	PAG315-4X4H2.2-OS
5 x 5 m	PAG315-5X5H2.2-OS

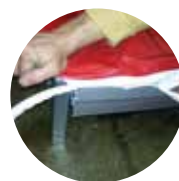
Height 2.50 m

3 x 3 m	PAG315-3X3H2.5-OS
4 x 4 m	PAG315-4X4H2.5-OS
5 x 5 m	PAG315-5X5H2.5-OS



## ► **PAGODE Quattro** : Roof tarpaulins

### Roof tarpaulins QUATTRO PAGODES



#### Bolt rope system (ralingues)

**TRANSLUCENT**  
white 620 g/m<sup>2</sup>

**OPAQUE**  
white 750 g/m<sup>2</sup>

**CRYSTAL**  
50/100 mm

	TRANSLUCENT white 620 g/m <sup>2</sup>	OPAQUE white 750 g/m <sup>2</sup>	CRYSTAL 50/100 mm
<b>3 x 3 m</b>	PAGO-BTBT-3X3M	PAGO-BTBO-3X3M	PAGO-BTCR-3X3M
<b>4 x 4 m</b>	PAGO-BTBT-4X4M	PAGO-BTBO-4X4M	PAGO-BTCR-4X4M
<b>5 x 5 m</b>	PAGO-BTBT-5X5M	PAGO-BTBO-5X5M	PAGO-BTCR-5X5M

#### ALU profile system (without profile)

	PAGO-BTBT-PA-3X3M	PAGO-BTBO-PA-3X3M	PAGO-BTCR-PA-3X3M
<b>3 x 3 m</b>	PAGO-BTBT-PA-3X3M	PAGO-BTBO-PA-3X3M	PAGO-BTCR-PA-3X3M
<b>4 x 4 m</b>	PAGO-BTBT-PA-4X4M	PAGO-BTBO-PA-4X4M	PAGO-BTCR-PA-4X4M
<b>5 m x 5 m</b>	PAGO-BTBT-PA-5X5M	PAGO-BTBO-PA-5X5M	PAGO-BTCR-PA-5X5M



### Roof tarpaulins QUATTRO DIAMANT



#### Straight valance

	PAGO-BTBT-LD-3X3M	PAGO-BTBO-LD-3X3M	PAGO-BTCR-LD-3X3M
<b>3 x 3 m</b>	PAGO-BTBT-LD-3X3M	PAGO-BTBO-LD-3X3M	PAGO-BTCR-LD-3X3M
<b>4 x 4 m</b>	PAGO-BTBT-LD-4X4M	PAGO-BTBO-LD-4X4M	PAGO-BTCR-LD-4X4M
<b>5 x 5 m</b>	PAGO-BTBT-LD-5X5M	PAGO-BTBO-LD-5X5M	PAGO-BTCR-LD-5X5M

#### Straight tensioned profiled valance (without profile)

	PAGO-BTBT-LDTP-3X3M	PAGO-BTBO-LDTP-3X3M	PAGO-BTCR-LDTP-3X3M
<b>3 x 3 m</b>	PAGO-BTBT-LDTP-3X3M	PAGO-BTBO-LDTP-3X3M	PAGO-BTCR-LDTP-3X3M
<b>4 x 4 m</b>	PAGO-BTBT-LDTP-4X4M	PAGO-BTBO-LDTP-4X4M	PAGO-BTCR-LDTP-4X4M
<b>5 x 5 m</b>	PAGO-BTBT-LDTP-5X5M	PAGO-BTBO-LDTP-5X5M	PAGO-BTCR-LDTP-5X5M

## ► PAGODE Quattro : Curtains tarpaulin



**TRANSLUCENT**  
white 620 g/m<sup>2</sup>



**OPAQUE**  
white 750 g/m<sup>2</sup>



**CRYSTAL**  
50/100 mm



**With window**

H 2.20 m			
3 m	PAGO-RIBT-3X3M-H2.2M	PAGO-RIBO-3X3M-H2.2M	PAGO-RICR-3X3M-H2.2M
4 m	PAGO-RIBT-4X4M-H2.2M	PAGO-RIBO-4X4M-H2.2M	PAGO-RICR-4X4M-H2.2M
5 m	PAGO-RIBT-5X5M-H2.2M	PAGO-RIBO-5X5M-H2.2M	PAGO-RICR-5X5M-H2.2M

H 2.20 m
PAGO-RIBTF-3X3M-H2.2M
PAGO-RIBTF-4X4M-H2.2M
PAGO-RIBTF-5X5M-H2.2M

H 2.50 m			
3 m	PAGO-RIBT-3X3M-H2.5M	PAGO-RIBO-3X3M-H2.5M	PAGO-RICR-3X3M-H2.5M
4 m	PAGO-RIBT-4X4M-H2.5M	PAGO-RIBO-4X4M-H2.5M	PAGO-RICR-4X4M-H2.5M
5 m	PAGO-RIBT-5X5M-H2.5M	PAGO-RIBO-5X5M-H2.5M	PAGO-RICR-5X5M-H2.5M

H 2.50 m
PAGO-RIBTF-3X3M-H2.5M
PAGO-RIBTF-4X4M-H2.5M
PAGO-RIBTF-5X5M-H2.5M

## ► Quattro gutter

**OPAQUE**  
white 750 g/m<sup>2</sup>



3m Width 400	PAGO-GOBO-3X3M
4m Width 400	PAGO-GOBO-4X4M
5m Width 400	PAGO-GOBO-5X5M

## ► Mudflap between posts



**TRANSLUCENT**  
white 620 g/m<sup>2</sup>

Height 2.20 m	PAGO-BABT-2.2M
Height 2.50 m	PAGO-BABT-2.5M

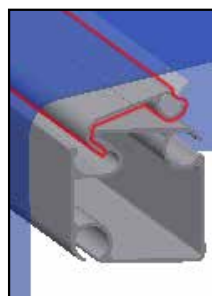
## ► Assembly bolt rope

**OPAQUE**  
white 750 g/m<sup>2</sup>



3 m	RALINGUE-3M
4 m	RALINGUE-4M
5 m	RALINGUE-5M

## ► Roof tension profile



3 m Width 2860	ACS312001
Set of 4 pieces	ACS312001-KIT4
4 m Width 1930	ACS3120012
Set of 8 pieces	ACS3120012-KIT8
5 m Width 2430	ACS3120011
Set of 8 pieces	ACS3120011-KIT8

# ACCESSORIES

## Pagode

### ► Pagode Quattro

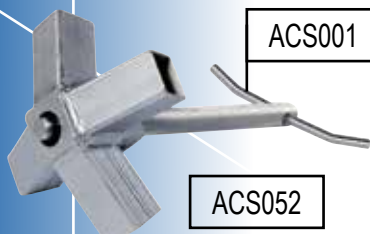
#### Corner piece



JAR001

#### Central junction

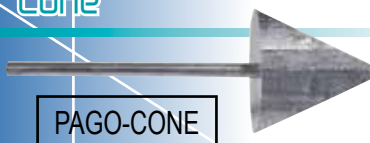
##### with tension rod



ACS001

ACS052

#### Cone



PAGO-CONE

#### Pagode cone extension



Length 270 mm 3 x 3 m	ACS341
Length 1095 mm 4 x 4 m and 5 x 5 m	ACS0342

#### Pole base plate

EMB001



#### Pole without base plate

2.20 m	POT3150011-01
2.50 m	POT315001-01



#### Anchoring piece



ACS009



#### Pagode truss



3 m	PAS3150012
4 m	PAS3150011
5 m	PAS315001

#### Reinforced pagode strut



3 m	PAI3050012
4 m	PAI3050011
5 m	PAI305001

### 2 methods of roof tensioning

#### Pagode roof bolt rope



3 m	RALINGUE-3M
4 m	RALINGUE-4M
5 m	RALINGUE-5M

or

#### Roof tension profile



ACS312

#### Gutter



PAGO-GOBO-2M to 6M

#### Fastening plate



ACO002

### 2 curtain bar systems

#### Pagode curtain bar



3 m	ACS0666
4 m	ACS0665
5 m	ACS0664

#### Support bracket of curtain bar



ACS007

#### Curtains bars set

Includes 3 bars + 4 brackets

3 m	PAGO-KIT-TR-3X3M
4 m	PAGO-KIT-TR-4X4M
5 m	PAGO-KIT-TR-5X5M

or

#### Curtain bar with rods (gooseneck)



3 m	ACS0266
4 m	ACS02661
5 m	ACS02662

## ► Folding tents Aluminum PRO

Dimensions:

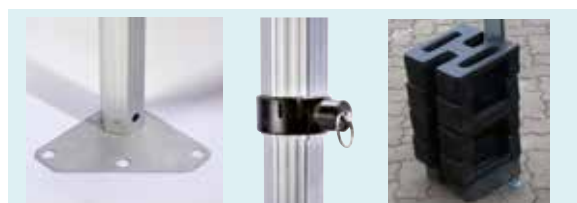
3 x 3 m, 3 x 4.5 m, 3 x 6 m, 4 x 4 m, 5 x 5 m

- professional use
- roof white tarpaulin fireproof M2 520 g/m<sup>2</sup>
- hexagonal feet Ø 50 mm in anodized aluminum thickness 2 mm
- joint and articulation parts in epoxy-finish PVC
- height adjustable from 1900 mm to 2200 mm in 5 cm steps
- 35 mm x 18 mm aluminum folding crossbeams, thickness 2 mm
- locking of all the sliding elements by spring pins
- hot-dip galvanized triangular base plates
- base plates equipped with 3 holes for staking fixing
- protection cover

**Optional:**

**Curtains 3 x 3 m**

**Ballast weight 30 kg**



Short-term installation.

From 70 km/h wind speed, we advise dismantling the structure.

Weights according to dimensions:

3 x 3 m: 90 kg/foot

3 x 4.5 m: 115 kg/foot

3 x 6 m: 125 kg/foot

4 x 4 m: 150 kg/foot

5 x 5 m: 235 kg/foot

CTS standard according to the decree of 23 January 1985



# TARPAULINS



► Roof and gable tarpaulins in **CRYSTAL**

- TRANSLUCENT tarpaulins
- CRYSTAL tarpaulins
- OPAQUE tarpaulins

*Roof tarpaulins, curtains, gable ends*



All our tarpaulins are made in Europe.

## Translucent

Allows light rays to pass through while diffusing them but does not allow objects to be distinguished.

- M2 fireproof PVC white 620 g/m<sup>2</sup>

### TRANSLUCENT white curtain 3 m, 4 m, 5 m - H 2.20 m, 2.50 m, 3 m

- closing by central exterior lacing
- side bolt ropes
- tension rod sheath
- rot mudflap
- curtain loops

### Roofs tarpaulins

PAGODE, DOME, PYRAL, DIAMANT

Two-slope structure, gable ends, side curtains, complete gable.



OPTION: with 50/100th crystal window

## Crystal

- transparent fireproof tarpaulin M2 50/100th

### Curtain CRYSTAL 3 m, 4 m, 5 m, H 2.20 m, 2.50 m, 3 m

- white translucent frame 620 g/m<sup>2</sup>
- closing by central exterior lacing
- side bolt ropes
- tension rod sheath (white translucent)
- anti-rot mudflap (white translucent)
- curtain loops

#### Options:

- tensioning bar for pagode curtain:  
3 x 3 m, 4 x 4 m, 5 x 5 m
- pagode curtain rod support bracket



## Opaque

Does not allow the passage of light rays.

- M2 PVC white 765 g/m<sup>2</sup>

### Solid curtain white 3 m, 4 m, 4.5 m, 5 m, 6 m for PRO folding structure with or without door

- white tarpaulin fireproof M2 520 g/m<sup>2</sup>
- roof and curtain connection by velcro 50 mm
- 4-points attachment to the pole

### Roofs tarpaulins

PAGODE, DOME, PYRAL, DIAMANT

Two-slope structure, gable ends, side curtains, complete gable.

#### Options:

- white gutter for PRO folding structure 3 m, 4 m, 4.50 m, 5 m, 6 m
- ballast weight: 30 kg for PRO folding structure

### OPAQUE CURTAIN 3 m, 4 m, 5 m, H 2.20 m, 2.50 m, 3 m

- closing by central exterior lacing
- side bolt ropes
- tension rod sheath
- anti-rot mudflap
- curtain loops



# CLADDING



► Cladding realized on a Topline structure 15 x 30 m H 3 m

- Glass panel
- Laminated panel
- Sandwich panel
- PVC panel
- Wooden panel
- Industrial panel



**Tailor made panels,  
please contact us**

## ► Continuous cladding

### Glass cladding panel

- thickness 30 mm l. 1000 mm x h. 2700 mm
- frame in aluminum profile
- filling: STADIP 33/2 glazing
- PVC connecting tab on one side



► Cladding for a Toplevel structure

### Laminated cladding panel

- thickness 30 mm l. 1000 mm x h. 2700 mm
- aluminum profile on both lengths
- filling: PVC sandwich panel 24 mm M2
- PVC connecting tab on one side
- white color



### Sandwich panel

- thickness 30 mm l. 1000 mm x h. 2700 mm
- male/female assembly system
- white color (other colors on request)
- European manufacturing



## ► Wooden cladding

**NEW**

### Wooden cladding panel

- thickness 30 mm l. 1000 mm x h. 2700 mm
- frame in aluminum profile
- filling: 21 mm wood, Northern spruce, A1OF cladding, square cut, Class III autoclave treatment
- PVC connecting tab on one side
- other sizes available



### Examples of achievements :



## ► Industrial cladding for storage and long-term buildings

### Steel panel

We offer a wide variety of galvanized and pre-painted steel cladding profiles.

The panels can be ribbed, sinusoidal, trapezoidal, all in various colors and thicknesses to meet all your needs.

Our range of profiles is suitable for all agricultural, industrial, residential and tertiary applications.



### Examples of achievements :



# DOORS AND FRAMES



- ▶ Solid or glazed aluminum door
- ▶ Service door
- ▶ Solid or glazed fixed frame
- ▶ Door impost
- ▶ Sliding door
- ▶ Power-driven door
- ▶ Door accessories

**Tailor made doors,  
please contact us**

## ► Solid or glazed aluminum door

### ATS aluminum double door

- colors:  
painted white (RAL9010) or gray (natural anodized)
- overall dimensions :  
L. 2040 x H. 2195 mm  
L. 2410 x H. 2140 mm
- with or without cross-brace
- top infill: STADIP 33/2 glazing, 6 mm Plexiglas or 24 mm sandwich panel
- with or without crossbeam
- bottom infill: sandwich panel 24 mm
- a 1-point anti-panic on service door
- a built-in fireman cremone bolt with rotating handle on semi-fixed hinged panel
- ATS doorstep
- optional: 2-point anti-panic, door closer, square oculus (diamond or circular possible)



**Other dimensions  
contact us**

Page 39

ACCESSORIES

## ► Door with canopy



## ► Service door



## ► Solid or glazed fixed frame



## ► Door impost



## ► Sliding door

- aluminum/steel frame
- filling: 24 mm insulation panel 24 mm two-sided fireproof M2 white color
- dimensions: different formats
- sliding on roller and omega rail
- ground guide plate
- floor latch locking system
- incl. long section or gable mounting bracket



Different models,  
according to structure,  
please contact us.



## ► Power-driven door (metal roller blind)

- solid roller blind, 10/10th, galvanized steel, with maximum rigidity and meets the highest safety requirements
- dimensions: different sizes available, please contact us
- locking: European barrel lock with 2 anchor points on end slat
- push button operation
- 20 cycles/day



# ACCESSORIES

## Doors

### 1-point or 2-points anti-panic



**Color:** white APC013 or silver APC012

### Parallel arm door closer



**Colors:**

white APC022 or silver APC023



### Fireman cremone



**Colors:**

white

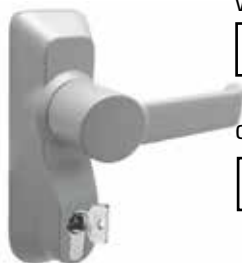
APC020

or silver

APC021

### Outdoor module

#### anti-panic



**Colors:**

white

APC0021

or silver

APC0011

### Compass door closer



**Colors:**

white

APC028

or silver

APC029



### Pair of reinforced handles



**Colors:**

white

APC081

or silver

APC071

### Door post claw



ACS074

Long section



ACS075

Long section



ACS073

Gable

Different models, according to structure, please contact us.

Galvanized steel.

### Half lock cylinder



APC026

Half high safety lock cylinder G5 nickel-plated brass 30X10  
Half lock cylinder 5 pins  
Comes with 3 keys.  
Indexable bit.

### Double cylinder



APC027

High safety double lock cylinder G5 nickel-plated brass 30X30  
Double cylinder. Five pins.  
Comes with 3 keys.

### Outer profile



Set of outer door profiles for cladding.

### ATS doorstep



Possibility to obtain spare parts for some door products, please contact us

# FOLDING FURNITURE

- ▶ European quality manufacturing
- ▶ Reliable and robust products suitable for intensive use
- ▶ Ease of storage, handling and transport with the appropriate racks



Certified  
ISO 9001  
(base)

## Folding furniture

1 table + 2 benches - Natural color



### Length 2 m - benches of 25

50 cm	GABR-200x050x025
60 cm	GABR-200x060x025
67 cm	GABR-200x067x025
80 cm	GABR-200x080x025

### Length 2.20 m - benches of 27

50 cm	GABR-220x050x027
60 cm	GABR-220x060x027
67 cm	GABR-220x067x027
80 cm	GABR-220x080x027

### Certification

- factory production certified ISO 9001 (base)
- standard NF EN581 outdoor furniture
- TUV certified

### Reinforced bases

- structure in painted steel thickness 3 mm
- quality finish
- galvanized steel hardware
- safety spring lock
- standard frame color: green

### Top treatment

- UV-resistant varnish
- uses: indoor and outdoor

## Folding tables

- structure in painted steel 3 mm thickness
- quality finish and precise assembly
- galvanized steel hardware
- high-functioning spring lock
- standard frame color: green
- non-planed fir wood top, varnished in several layers
- standard color: natural color
- table: thickness 25 mm
- bench: thickness 28 mm



Width	Reference
Length 2 m	
50 cm	TABR-200x050
60 cm	TABR-200x060
67 cm	TABR-200x067
80 cm	TABR-200x080
Length 2.20 m	
50 cm	TABR-220x050
60 cm	TABR-220x060
67 cm	TABR-220x067
80 cm (wide bases)	TABR-220x080

## Folding benches

Natural color



Width	Reference
Length 2 m	
25 cm	BABR-220x025
Length 2.20 m	
25 cm	BABR-220x025
27 cm	BABR-220x027
27 cm with backrest	BABR-220x027D

### Hot stamping



### Customized stamping

Maximum 15 characters



p. 42 - 43

ACCESSORIES

## Transport and storage

ATS manufactures custom-made racks, especially adapted to the transport and storage of folding furniture. The galvanized steel racks are equipped with a fork guide on each side.



# ACCESSORIES

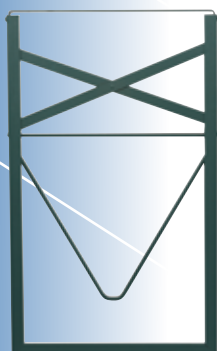
## Folding furnitures



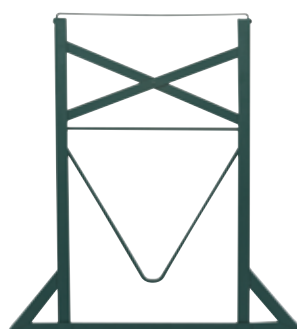
Certified  
ISO 9001  
(base)

### Bases

Bases made of angle iron 30x30x3mm furnace painted  
Manufacturing ISO 9001



Thin



Wide (for 80 cm tables)



Bench feet



Bench with back-  
rest feet

### Folding tables

**Thin (44x74 cm)** PTBR-74x44

**Wide (64x74 cm)** PTBR-74x64  
Table width 80 cm

### Complete folding table set

2 feet + 2 latches + hardware

**Thin (44x74 cm)** SET- PTBR-74x44

**Wide (64x74 cm)** SET- PTBR-74x64

### Folding benches

**23 x 44 cm** PBBR-23x44

**With backrest** PBBR-DOSSIER

### Complete Set Folding benches

2 feet + 2 latches + hardware

**23 x 44 cm** SET-PBBR-23x44

**With backrest** SET-PBBR-D

### Folding table tops Natural color - Rounded corners

Length	Reference
Length 2 m	Drilled
25 cm	PLBR-200x025-P
50 cm	PLBR-200x050-P
60 cm	PLBR-200x060-P
67 cm	PLBR-200x067-P
80 cm	PLBR-200x080-P

Length	Reference
Length 2.20 m	Drilled
25 cm	PLBR-220x025-P
27 cm	PLBR-220x027-P
50 cm	PLBR-220x050-P
60 cm	PLBR-220x060-P
67 cm	PLBR-220x067-P
80 cm	PLBR-220x080-P



## Extension for bases

Available for thin bases:  
Furnace painted steel extensions  
to switch from meal height to buffet height (+ 20 cm).



REH-TABR



## Customized stamping

Maximum 15 characters



MARQUAGE

## Hot stamping



FER-MARQUAGE-GB

## Fir-tree batten section 40 X 40 mm



Length	Reference
220 mm	TASA-40x40x220
450 mm	TASA-40x40x450
560 mm	TASA-40x40x560
760 mm	TASA-40x40x760
1000 mm	TASA-40x40x1000

Quality finish and precise assembly

## Holding latch



LOBR-NM

## Special screw for tables and benches x 100



VIS-6x42.5 - BR

## HEXAGONAL NUT M6 Nylstop x 100



ECR-H-M06 - Z

## Protective pad



PPP-TBBR

# RECEPTION FURNITURE

Ergonomic, robust, aesthetic and friendly



► ARDENNE high bar table

## ► “ARDENNE” high bar table

- folding
- ergonomic, robust, aesthetic and friendly
- painted steel round tube frame
- PVC shock absorbing outer ring
- “Verzalit” top Ø 85 cm, thickness 35 mm
- height: 110 cm - weight: 13.5 kg
- top color: gray

MANGE-ARDENNE



- base color: hammered gray
- non-slip pads
- withstands frequent handling
- easy storage



# TRANSPORT RACKS



- ▶ Ideal for transporting floors, structures and tarpaulins.
- ▶ Facilitates handling, storage and transport
- ▶ European quality manufacturing

**Tailor made racks,  
please contact us**

**CUSTOMIZATION  
OF YOUR RACKS BY  
PERMANENT MARKING**

## ► Use

• Structures • Floors • Taraulins • Doors • Ramps • Cladding • Folding furniture

## ► Advantages

• Uniform fork spacing • Stackable with other racks  
• Interchangeable covers, velcro closure

## ► Manufacturing

• Hot-dip galvanized steel • Quality finish

## Standard racks

## ► A complete range

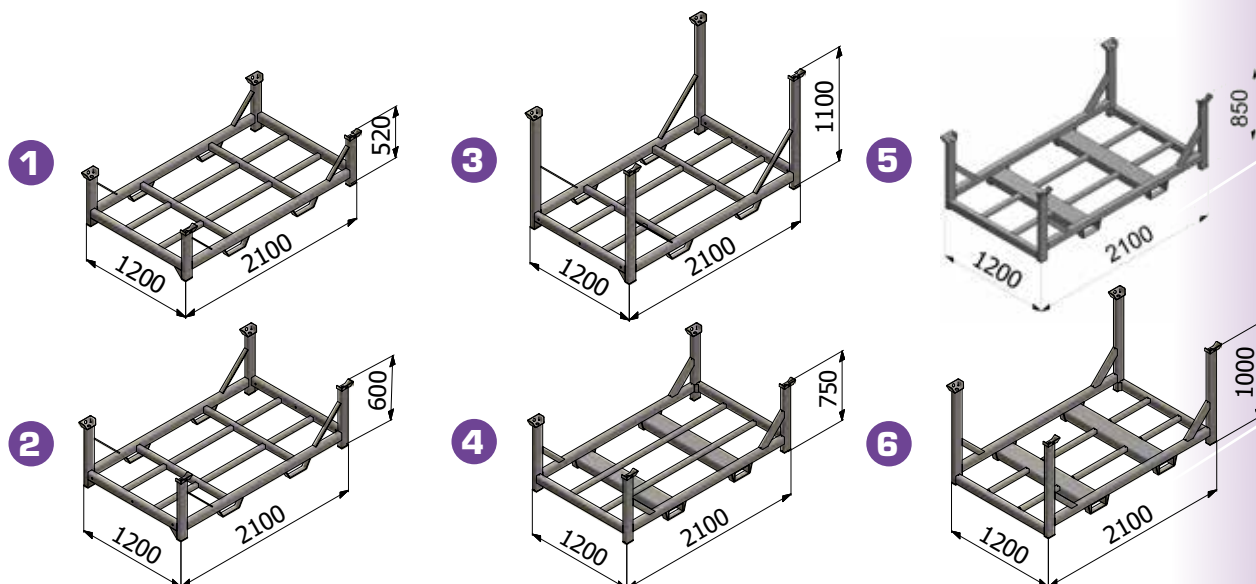
### Frames rack

- galvanized steel frame
- thickness: 3 mm
- dimensions: 2.10 m x 1.20 m
- weight: approx. 96 kg



Items	Width (mm)	Depth (mm)	Height (mm)
<b>1</b> Frames rack ECO <span>RAC0051</span> - useful height 310 mm	2100	1200	520
<b>2</b> Frames rack ECO <span>RAC005</span> - useful height 444 mm	2100	1200	600
<b>3</b> Frames rack ECO <span>RAC0052</span> - useful height 944 mm	2100	1200	1100
<b>4</b> Frames rack off-the-shelf <span>RAC007</span> - useful height 515 mm	2100	1200	750
<b>5</b> Rack XL <span>RAC002</span> - useful height 595 mm	2100	1200	850
<b>6</b> Rack XXL* - useful height 860 mm <span>RAC021</span> • 8 cm extra loading height	2100	1200	1000

\* also available in XXXL rack, useful height 945 mm and in XXXXL rack, useful height 1300 mm



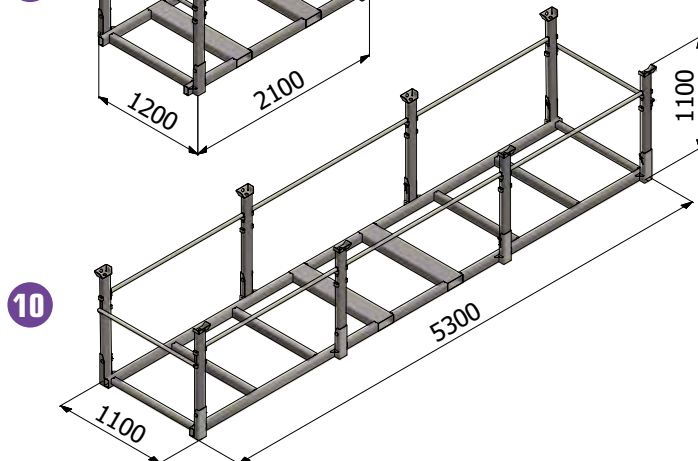
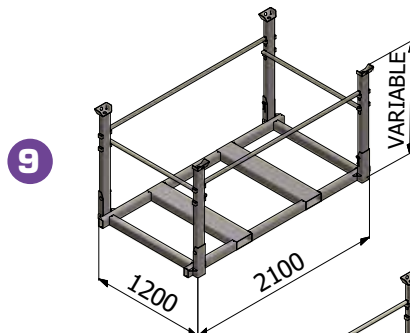
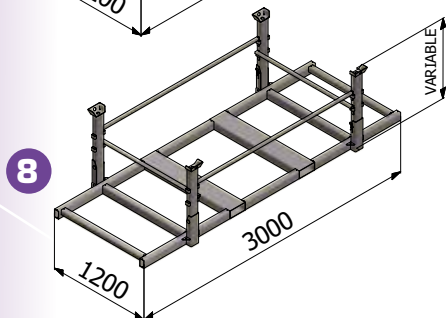
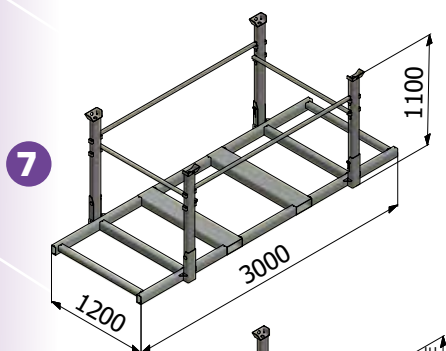
## Floor rack

- galvanized steel frame
- thickness: 3 mm
- 4 removable poles
- 2 longitudinal crossbeams
- 2 transverse crossbeams
- dimensions: 3 m x 1.15 m
- weight: approx. 115 kg



### Standard racks

Items	Width (mm)	Depth (mm)	Height (mm)
<b>7 Floor rack STANDARD</b> <span>RAC001P</span> - useful height 1000 mm (60 boards)	3000	1200	1100
<b>8 Floor rack</b> - useful height 685 mm (40 boards) <span>RAC0011</span> - useful height 1500 mm (90 boards) <span>RAC0013</span>	3000 3000	1200 1200	810 1600
<b>9 Floor rack CANOPY</b> • dimensions: 2 m x 1.15 m • weight: approx. 100 kg - useful height 1000 mm (40 m²) <span>RAC017</span> - useful height 1400 mm (60 m²) <span>RAC0171</span> - useful height 1800 mm (80 m²) <span>RAC0172</span>	2000 2000 2000	1200 1200 1200	1100 1500 1900
<b>10 Floor rack 5.30 m</b> <span>RAC025</span> • 8 removable poles • 6 longitudinal crossbeams • 2 transverse crossbeams • weight: approx. 200 kg - useful height 1000 mm (60 boards)	5300	1200	1100



## Canvas covering rack

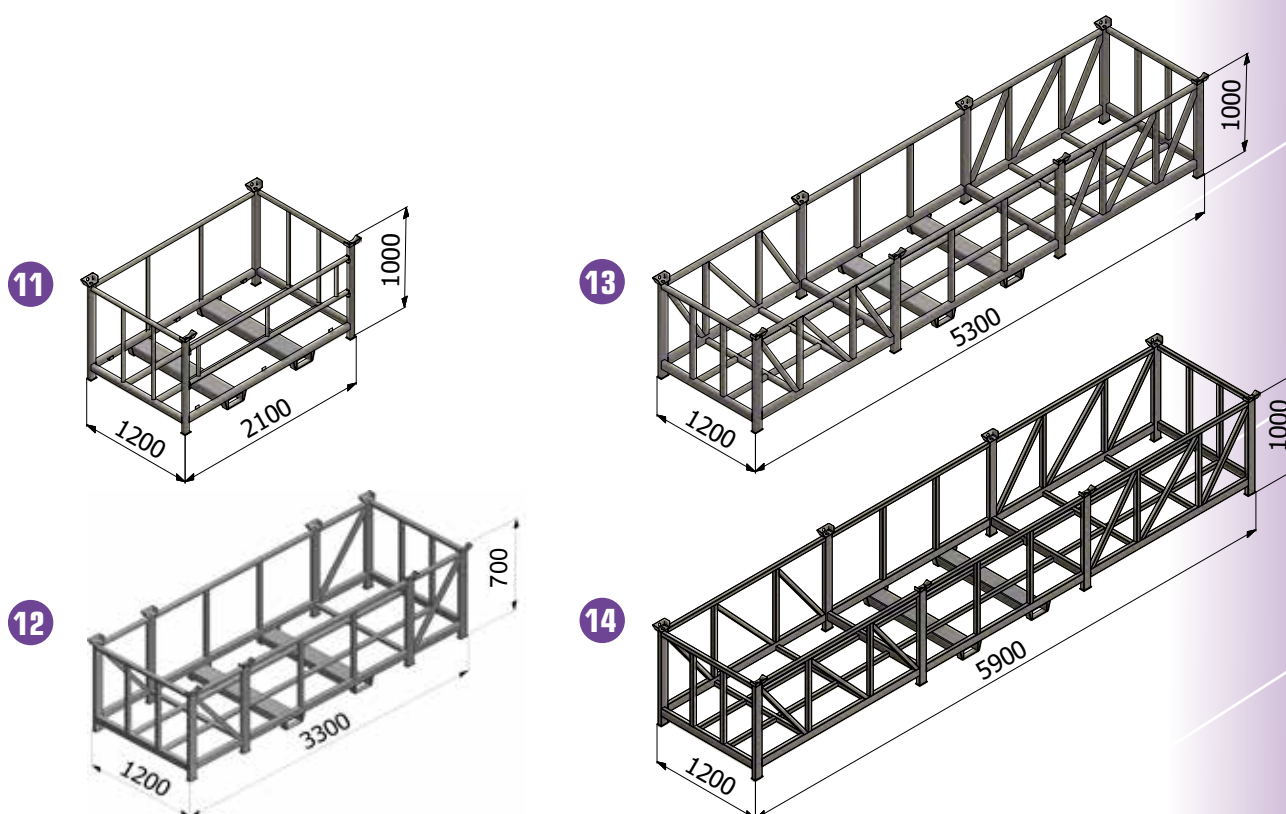
- galvanized steel frame
- dimensions: 2.10 m x 1.20 m
- thickness: 2 mm
- weight: approx. 120 kg



## Standard racks



Items	Width (mm)	Depth (mm)	Height (mm)
<b>11</b> Complete standard canvas rack without tarpaulin - useful height 1000 mm <span>RAC003</span> With green protective tarpaulin <span>RAC003V</span> With gray protective tarpaulin <span>RAC003G</span>	2100	1200	1000
<b>12</b> Canvas covering rack 3.30 m <span>RAC0302</span> • weight: approx. 154 kg	3300	1200	700
<b>13</b> Canvas covering rack 5.30 m <span>RAC030</span> • weight: approx. 220 kg	5300	1200	1000
<b>14</b> Canvas covering rack 5.90 m <span>RAC065</span> • weight: approx. 228 kg	5900	1200	1000



## Doors rack

- galvanized steel
- capacity 2 to 5 doors.

Possibility of rack  
for imposts  
or stationary frames

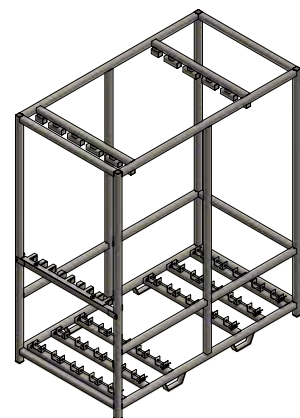
15



To hold the door in place at the top,  
PVC protective caps are used.



Metal axles with ertalon wheels.



Doors hold on the wheels.



## Articles

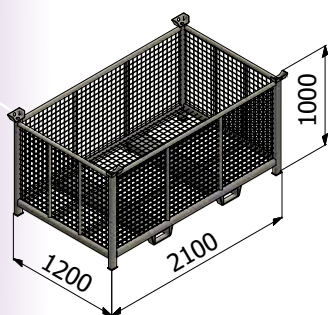
- 15 Doors rack:  
tailor-made (depending on the size of the doors)

**Tailor made racks,  
please contact us**

## Wire mesh rack

- galvanized steel
- thickness: 2 mm
- weight: approx. 120 kg

16



Items

Width (mm)

Depth (mm)

Height (mm)

- 16 Wire mesh rack RAC0221  
- useful height 1000 mm

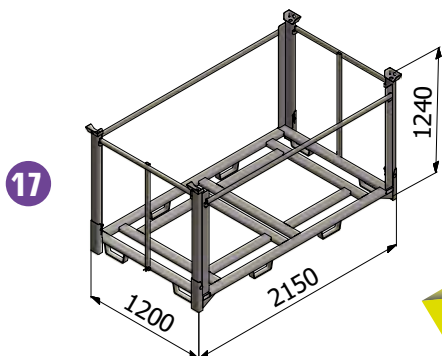
2100

1200

1000

## Folding furniture rack

- galvanized steel
- 4 removable poles
- 2 longitudinal crossbeams
- 2 transverse crossbeams "T"
- capacity: 15 folding furnitures (200 x 060 x 025 cm) ATS model
- weight: approx. 100 kg



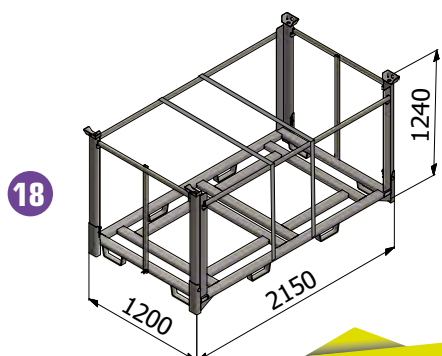
**Tailor made racks,  
please contact us**



Items	Width (mm)	Depth (mm)	Height (mm)
<b>17</b> Folding furniture rack - useful height 1050 mm	2150	1200	1240

## Padlockable rack for folding furniture.

- galvanized steel
- 4 stationary poles
- 1 locking gate
- capacity: 15 folding furnitures (200 x 060 x 025 cm) ATS model
- weight: approx. 100 kg



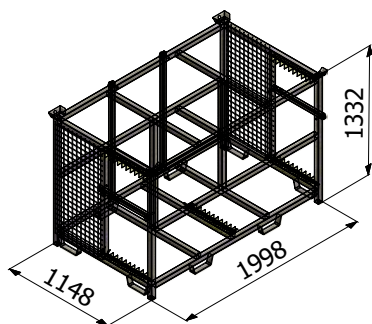
**Tailor made racks,  
please contact us**



Items	Width (mm)	Depth (mm)	Height (mm)
<b>18</b> Padlockable rack - useful height 1050 mm	2150	1200	1240

## Ramps rack

- galvanized steel
- thickness: 2 mm
- weight: approx. 100 kg



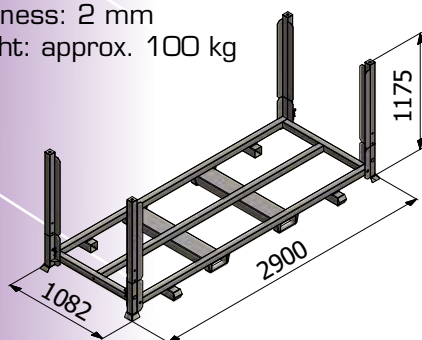
Dimensions for 2 m x 1 m ramps.  
Possibility of other racks dimensions tailor-made, please contact us.



**All racks can be  
tailor-made,  
ask us!**

## Solid cladding racks

- galvanized steel
- thickness: 2 mm
- weight: approx. 100 kg



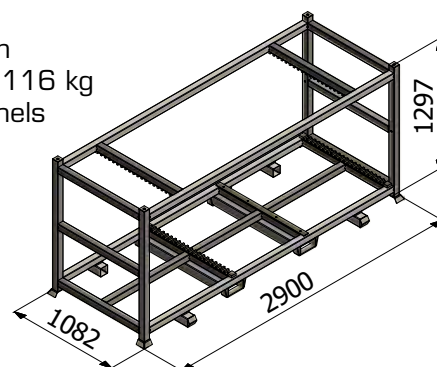
Solid cladding



Rack dimensions for 2700 x 1000 mm cladding.  
Possibility of other racks dimensions tailor-made, please contact us.

## Glass cladding rack

- galvanized steel
- thickness: 3 mm
- weight: approx. 116 kg
- capacity: 15 panels



Glass  
cladding



Open front  
with safety bar  
to access the panels



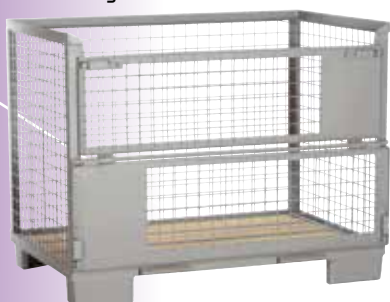
Option: protection plate



## EUROBOX crate wire mesh storage

Metal wire mesh crate equipped with a half door at the front for easy access to the container when stacked.  
Wooden bottom. Opening: 1 flap half-folding on one side at 1200 mm

Dimensions: 1240 x 840 x 970 mm  
Weight: 68 kg  
Payload: 1000 kg



Half height  
opening

Dimensions: 1240 x 840 x 500 mm  
Weight: 55 kg  
Payload: 500 kg



Opening

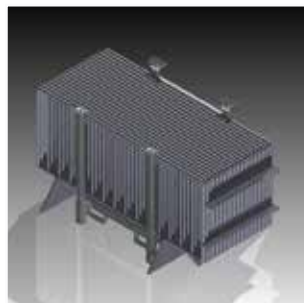


## Rack for Vauban barriers

- galvanized steel
- fork guide
- thickness: 2 mm
- weight: approx. 45 kg
- capacity: 20 barriers



All racks can be  
tailor-made,  
ask us!



## Election panels rack

- galvanized steel
- thickness: 2 mm
- weight: approx. 45 kg

For "Exhibition Grid" panels



For "Elections" panels



## Transport rack

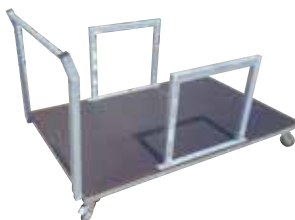
- galvanized steel
- thickness: 3 mm
- bottom and 4 closed sides in wood paneling
- weight: approx. 100 kg



The racks are stackable

## Transport trolley

- galvanized steel trolley
- gripping handle
- wheels diameter 125 mm, swiveling
- wooden bottom



## Transport trolley for tables

- galvanized steel trolley
- heavy-duty wheels
- 2 braked swiveling wheels
- 2 fixed wheels



Table mounted  
on trolley

# MACHINING CENTER

## Structure

**NEW**

### ► Investment in a new machining line

To meet the requirements of an increasingly competitive market, ATS invests in a high performance machine.



### Machining center

This 4-axis CNC gantry machining center is designed to drill, mill and thread at any angle from  $-90^{\circ}$  to  $+90^{\circ}$  on bars or parts made of aluminum, PVC, light metal and steel up to 2 mm thick. The moving part of the machine consists of a power-driven double gantry on a high precision gear. The new technopolymer covering has been designed to combine maximum functionality, accessibility, soundproofing and lighting with safety and ergonomics.

It is able to perform even heavy operations with excellent, fast and precise results. The 12-chamber tool magazine integrated in the mobile portal has two special positions for accommodating a saw blade with a maximum diameter of 250 mm and an angular machining unit.

The machine can be used in double dynamic operation with the version with clamping and handling system. It has a laser zone scanner for innovative access control to the machine, which increases safety and standards for the operator and machine interface.

### Our production tools

ATS has 2 productionsites, one site for the aluminum machining and the second for the flooring.

We are expanding our production range, with 3 machining centers, 1 double-head numerical control unit and a number of drill presses.

We also have a 2 belt sanding machine, ALU and STEEL welding stations and a complete metal workshop.

Our design office, with 4 people, is equipped with CAD/CAM software and INVENTOR licenses, which allows us to meet your specific requests, custom projects and comply with safety standards.

Thanks to this investment, we are now able to respond even more quickly to your needs.



[www.ats67.com](http://www.ats67.com)

New achievements..



Trust our experience

Marquees, floors, customized furniture, mobile structures and event installations, we will offer you the the most efficient solutions and the most adapted to all your requirements.



# THE CUBE



**Headquarters:**

Parc d'Activité des Coteaux de la Mossig  
13, rue Robert Minder 67310 Wasselonne  
Phone: (33) 03 88 04 25 25  
Fax: (33) 03 88 04 25 71  
**www.ats67.com**  
**E-mail : info@ats67.com**

**Africa Agency:**

ATS AFRIC  
N°6 Douar Maklata, sidi Moussa Ben Ali  
Mohamedmedia - MAROC  
Mobile phone France: 00 33 (0) 6 86 87 45 70  
Mobile phone MAROC : 00212 (0) 661 23 55 88  
**morand.ats@gmail.com**